

# Cochrane Horseshoe Club

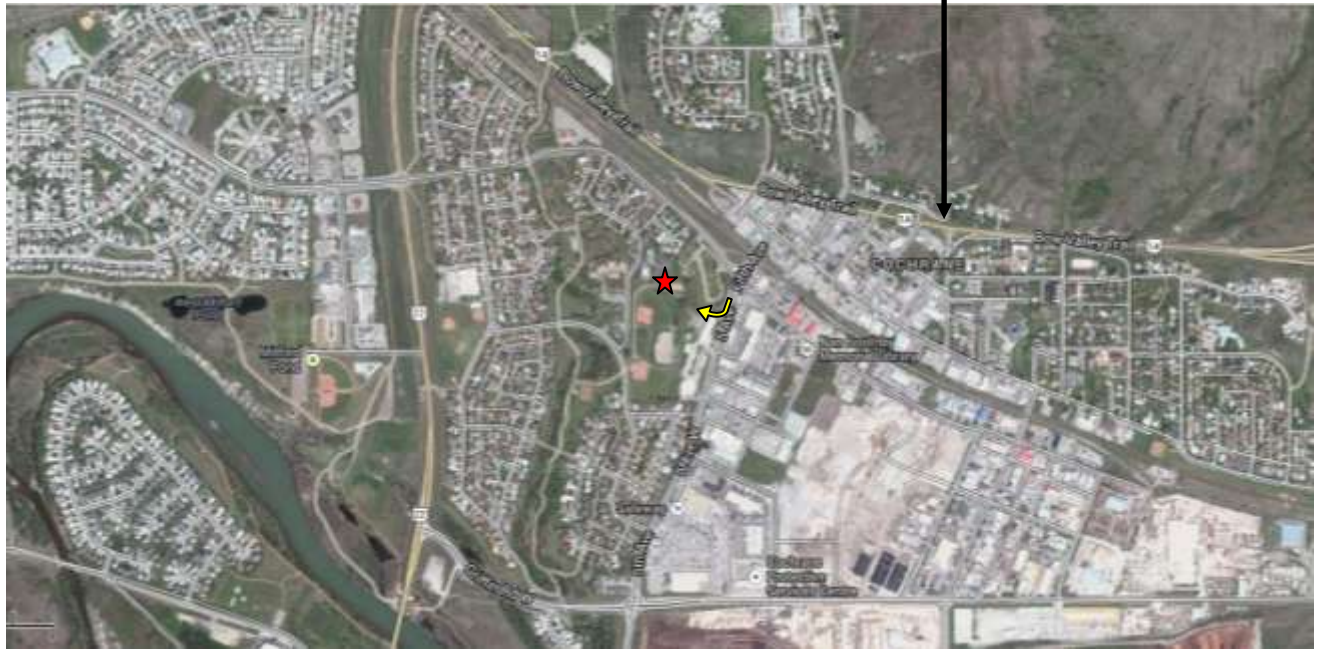
*Located approximately 20km NW of the Calgary city limits east of the junction of Highway 22 and Highway 1A.*

*From Highway 1A, turn south on 5th Avenue, cross over the railway tracks and turn right, just before the curling rink. ↩ Continue down the hill to your right and you'll see the courts at the bottom of the hill. ★*

*Location of courts: ★*

*Behind the Cochrane Curling Rink*

*Highway 1A*



Camp  
here

Rodeo  
Grounds

Curling  
Rink